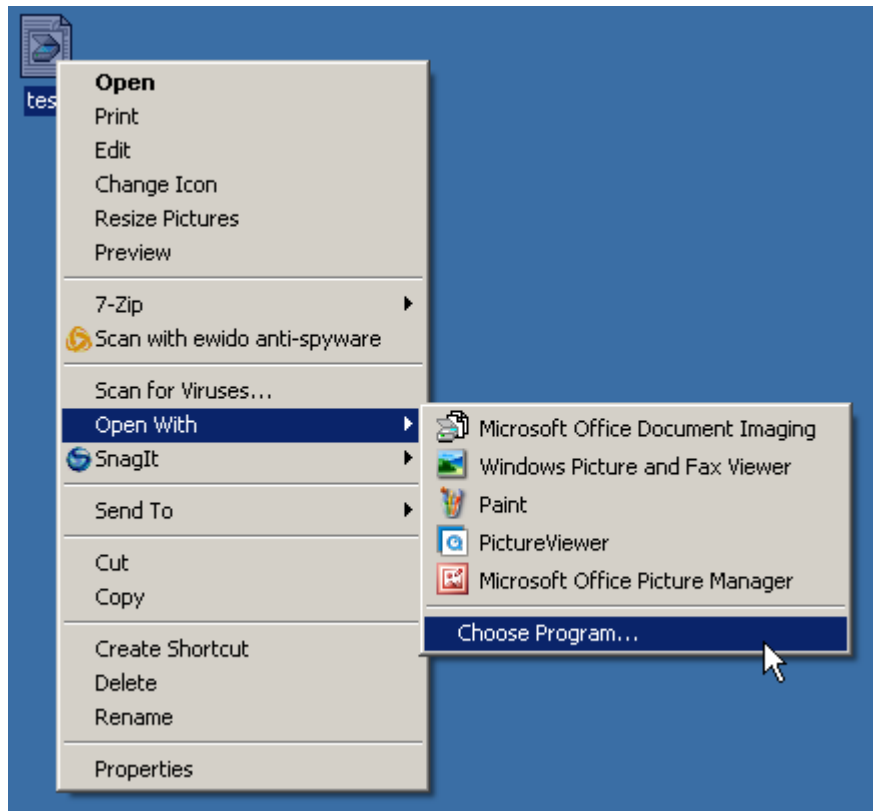


Changing the Default TIF/TIFF Viewer

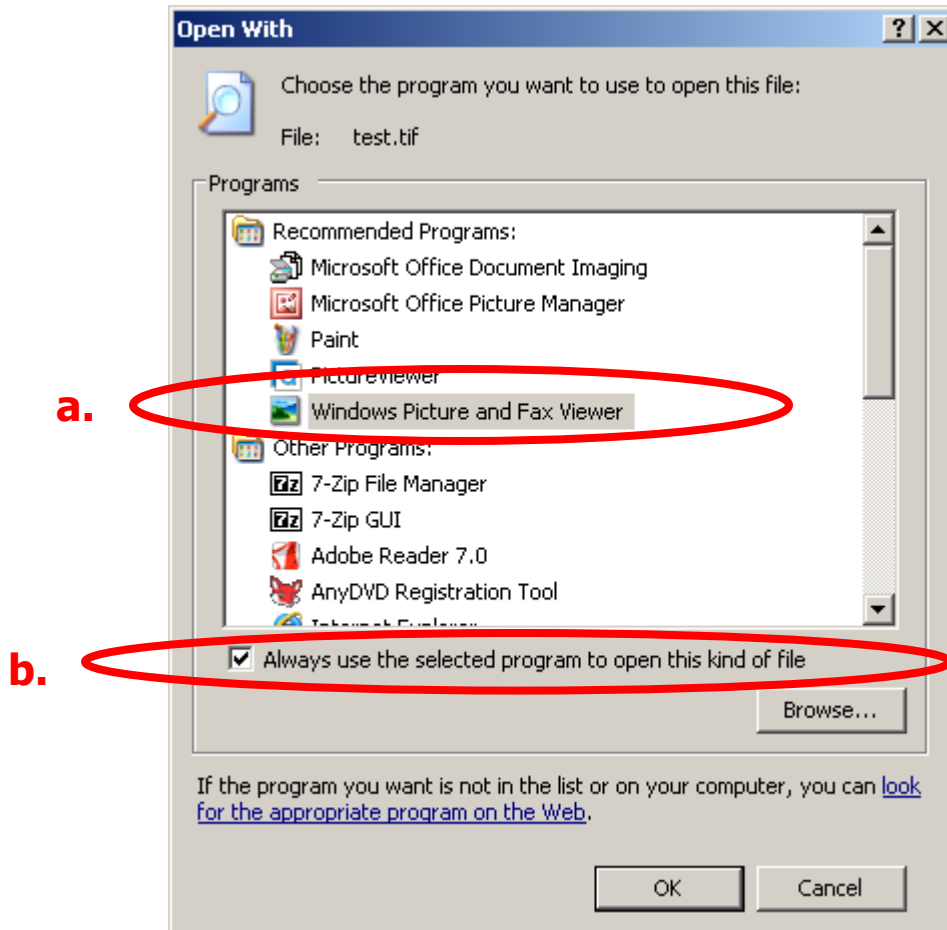
The default TIF/TIFF viewer on most Penn State Harrisburg computers is **Microsoft Office Document Imaging** or **Microsoft Picture and Fax Viewer**. Most users will encounter TIF/TIFF images as scanned documents when viewing candidates' information while on a search committee, for example.

While either of the above programs will suffice, a user may wish to change the default program for viewing these files. The following instructions illustrate how to change the default TIF/TIFF viewer in Windows XP.

1. When prompted to open or save the file, choose **Save**, and save it to your **Desktop**
2. Right-click the file and click on **Open With → Choose Program...**



3. You will then be presented with a list of **Recommended Programs** that are capable of opening the document.
 - a. Select the program you want (e.g., **Windows Picture and Fax Viewer**) or click on **Browse** to find one not on the list
 - b. Check the **Always use the selected program to open this kind of file** checkbox
 - c. Click **OK**



The file should now (and subsequently) open in the program you selected.

If you experience any problems with any of the above steps, or if you still cannot open or save the document, please call the IIT Help Desk at x6188.

□